

Apartamentos T3 Penthouse

Planta (Apartamento T3)

(196 m²)

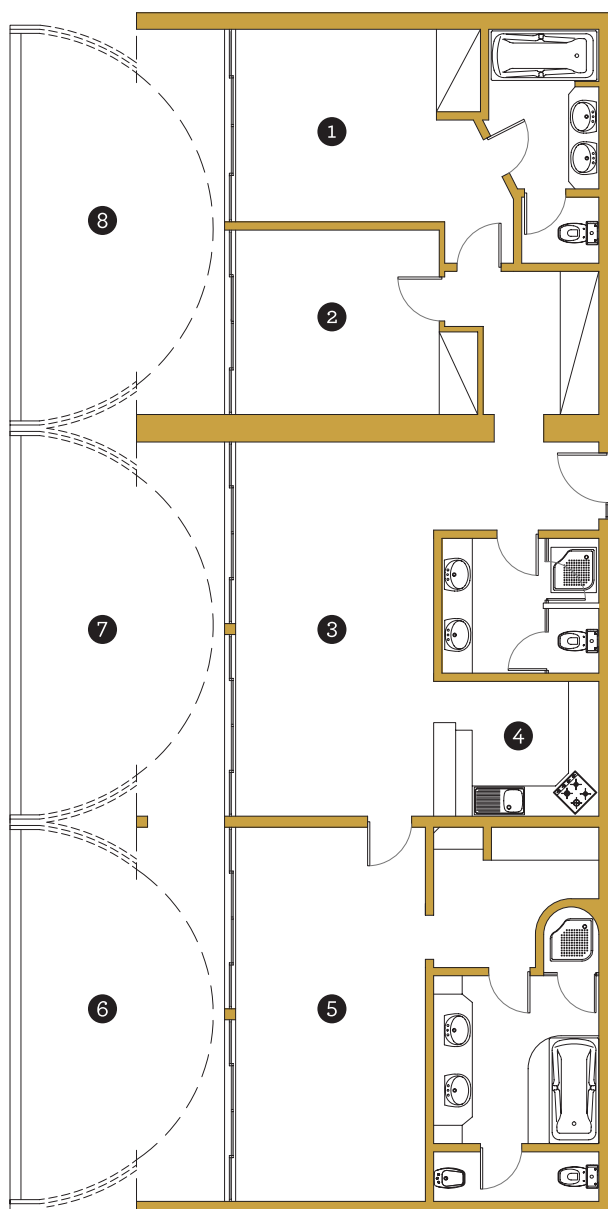


QUINTA DO LAGO
COUNTRY CLUB

Three-bedroom Penthouse

Floor plan (Three-bedroom apartment)

(196 m²)



- 1 - Quarto | Bedroom
- 2 - Quarto | Bedroom
- 3 - Sala | Living room
- 4 - Kitchenette
- 5 - Quarto | Bedroom
- 6 - Terraço | Balcony
- 7 - Terraço | Balcony
- 8 - Terraço | Balcony